



Discover, Travel, Relax

GEORGIA PROTECTED AREAS

In 1996, the Georgian Parliament recognized the importance of the natural and cultural areas within Georgia by passing the Law on the System of Protected Areas. This law created a legal basis for the establishment of protected areas, with the objective to protect outstanding natural environment and valuable cultural heritage. Subsequently, internationally recognized categories of protected areas and their application procedures were introduced in Georgia, which is based on recommendations developed by IUCN - The World Conservation Union (www.iucn.org).

According to this law, the following categories of Protected Areas may be established and operated in Georgia:

PROTECTED AREA	OBJECTIVE	CATEGORY (IUCN)
Strict Nature Reserve	Protected area managed mainly for science of wilderness protection	I
National Park	Protected area managed mainly for ecosystem protection and recreation	II
Natural Monument	Protected area managed mainly for conservation of specific natural features	III
Managed Nature Reserve	Protected area managed mainly for conservation through management intervention	IV
Protected Landscape	Protected area managed mainly for landscape/seascape protection and recreation	V
Multiple Use Area	Protected area managed mainly for the sustainable use of natural ecosystems	VI

The Agency of Protected Areas (DPA) of the Ministry of Environment Protection and Natural Resources coordinates system level planning of protected areas network, initiates their establishment and supervises the management of individual PAs, in order to: a) protect life support systems, biological diversity, and natural resources; b) support development of research, education, and tourism activities; and c) contribute to the preservation of cultural heritage.

More detailed information on the Agency of Protected Areas is available at: www.apa.gov.ge

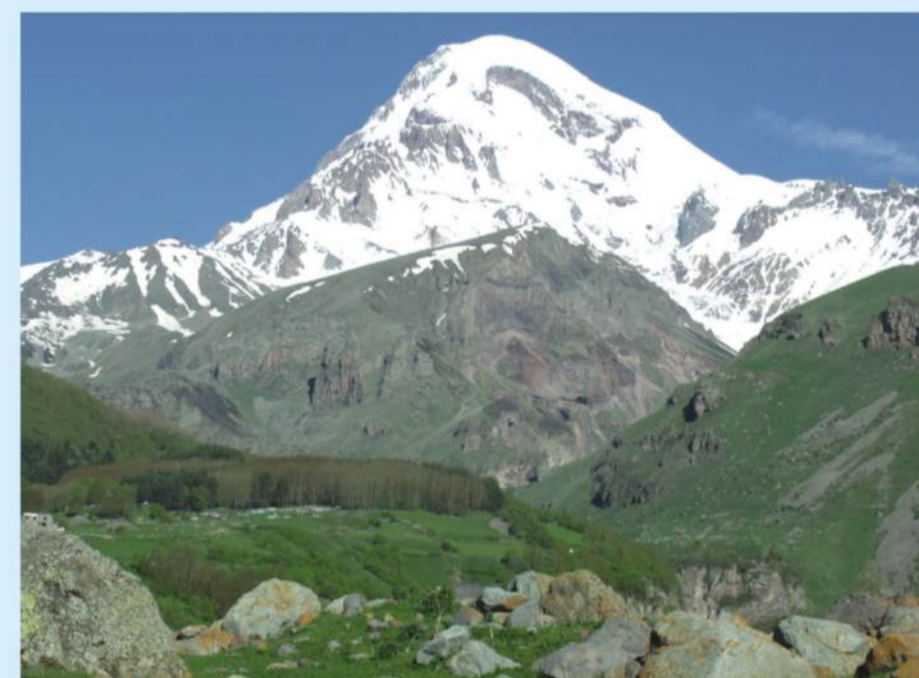
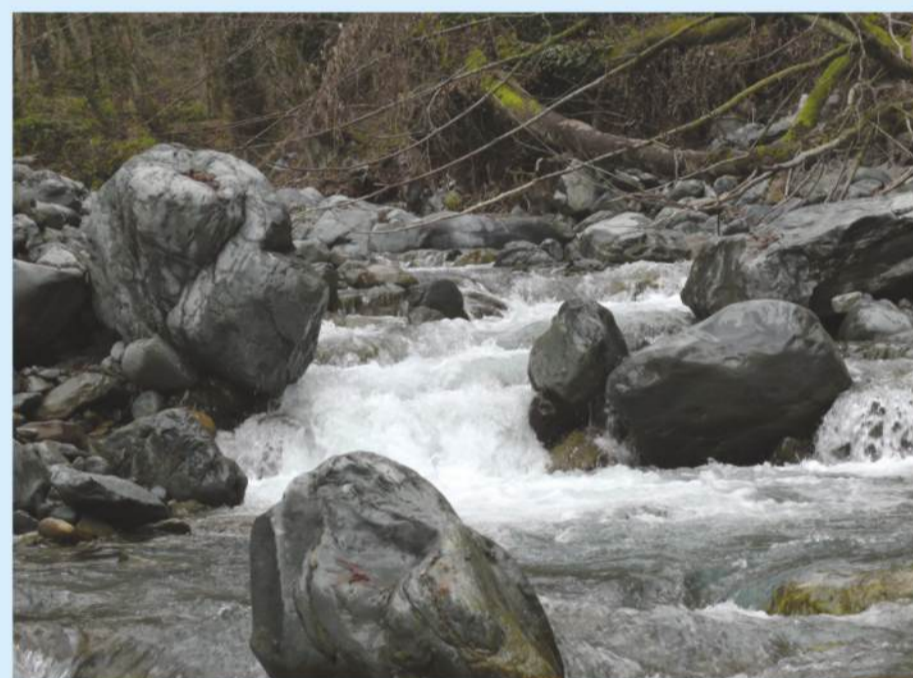
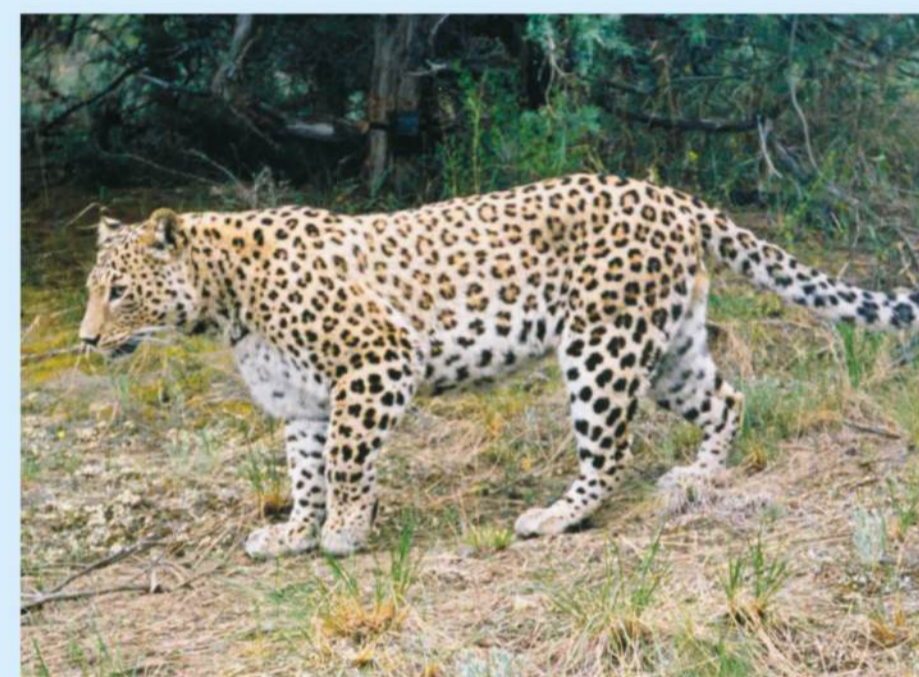
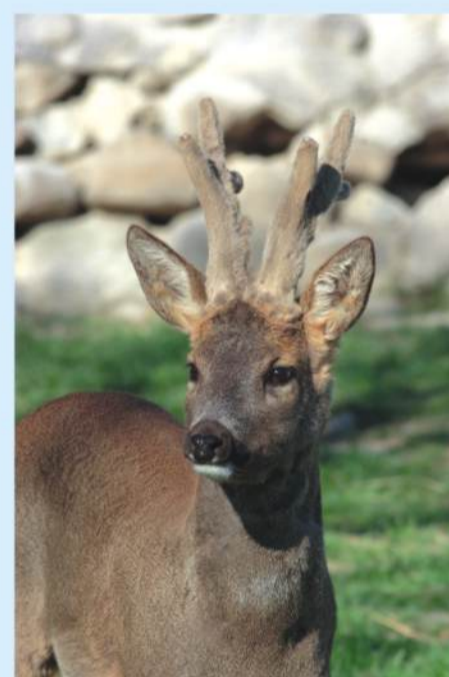
TOURISM AND PROTECTED AREAS

Protected Areas of Georgia provide unique and divers opportunities for travelers, tourists and nature lovers for active recreation, and to spend holidays and weekends in pleasant environment.

The administrations of Protected Areas, specially trained staff, existing and planned infrastructure, amazed diversity of nature, endemic flora and fauna - all these are assurance of unforgettable memories.

Visitors to Georgia Protected Areas can enjoy hiking, trekking, horse riding, boating, birdwatching, botanical trips, photography, fishing, educational and research programs, etc.

For trip planning you may contact the administration of an individual Protected Area or the Agency.



To date, there are five categories of protected areas in Georgia and their total area is **462,676 ha**, what comprises 7.0 % of the total territory of the country. Brief information on the protected areas in each category is provided here.

I. Strict Nature Reserve.

The first Reserve in Georgia was established in 1912 in the Lagodekhi Ravine. Access to such protected area is prohibited - only educational visits and non-manipulative scientific research is allowed, subject to special authorization. Currently there are 18 Strict Nature Reserves operating in Georgia with the total area of 169,391 ha.

II. National Park

The first National Park in Georgia (Tbilisi National Park) was founded in 1973, but later was eradicated. In 1995 Borjomi-Kharagauli National Park was established. National Parks occupy comparatively large areas. Therefore, they bear special significance in terms of conserving biodiversity. In addition, the National Parks play a significant role in tourism development, both locally and internationally by promoting the natural heritage of Georgia. Kolkheti National Park was founded in 1998, Tusheti and Vashlovani National Parks - in 2003, Mtirala National Park - in 2006. It is planned to establish five more National Parks - in Racha, Svaneti, Javakheti, Tbilisi and Kazbegi. In 2007 Borjomi-Khargauli National Park became member of PAN-Parks.

III. Natural Monument

The first three Natural Monuments were created in Georgia in 2003, with a total area of 238.5 ha. These are comparatively small areas which nevertheless have significant value or special features. This can be caves, gorges, or river deltas. It is planned to establish several more Natural Monuments.

IV. Managed Nature Reserve

The first hunting Reserve in Georgia was established in 1957 in Gardabani district - in 1996 it was granted with the managed Nature Reserve category. In this type of protected area, human interference is allowed if it is aimed at restoring flora and fauna species. The sustainable use of particular renewable natural resources is also allowed. To date there are 11 Managed Reserves in Georgia with a total area of 54,184 ha.

V. Protected Landscape

There is one protected landscape in Georgia - Tusheti Protected Landscape (27,903 ha), established in 2003. David-Gareji Protected Landscape will also be established (156,400 ha). Sustainable use of natural resources and tourism development are allowed in the Protected Landscapes, unless they not jeopardize conservation goals.

IN THE PROTECTED AREAS OF GEORGIA IT IS PROHIBITED TO:

- Take domestic animals with you.
- Take any firearms or other weapons.
- Collect plants, rocks or fossils.
- Catch, follow or damage any animals.
- Climb trees, rocks, enter caves and stand at the edge of the valleys, canyons and gorges.
- Damage the historical monuments, collect relics, carry out unwarranted excavations
- Light fires, except in the specially designed places.

THE FOLLOWING RECREATIONAL ACTIVITIES CAN BE ORGANIZED IN THE PROTECTED AREAS OF GEORGIA:

1. Birdwatching
2. Adventure
3. Rafting
4. Historical-cultural
5. Photographing
6. Amateur fishing
7. Camping in mountains



Agency of Protected Areas

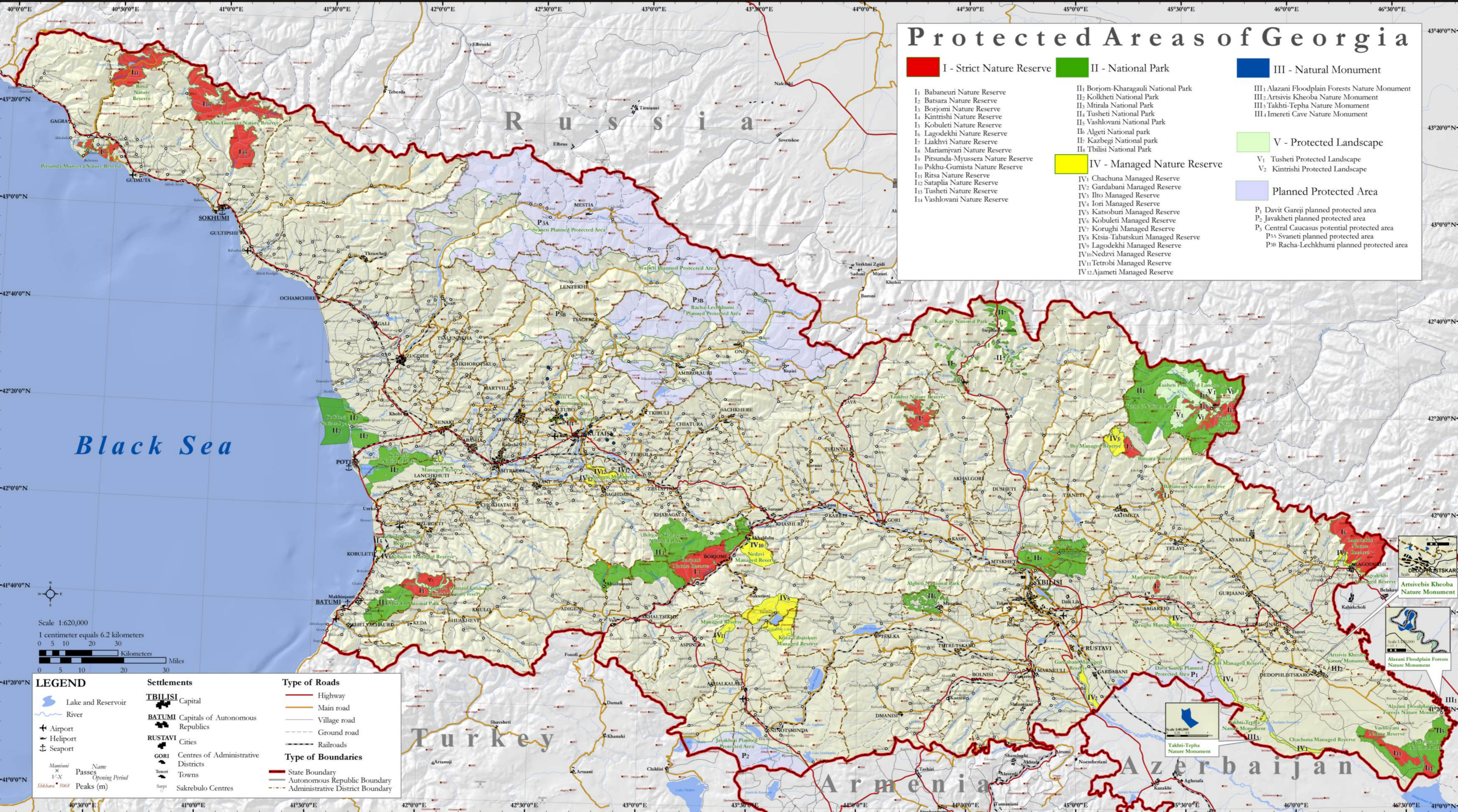
Ministry of Environment Protection and Natural Resources of Georgia

Gulua Str. 6, V floor, Tbilisi, Georgia
Tel.: (995 32) 75 23 53
E-mail: info@apa.gov.ge
Web-site: www.apa.gov.ge



Protected Areas of Georgia

- I - Strict Nature Reserve
 - II - National Park
 - III - Natural Monument
 - IV - Managed Nature Reserve
 - V - Protected Landscape
 - Planned Protected Area
- I - Strict Nature Reserve**
- I1 Babaneuri Nature Reserve
 - I2 Batsara Nature Reserve
 - I3 Borjomi Nature Reserve
 - I4 Kintrishi Nature Reserve
 - I5 Kobuleti Nature Reserve
 - I6 Lagodekhi Nature Reserve
 - I7 Liakhvi Nature Reserve
 - I8 Mariamjvari Nature Reserve
 - I9 Pitsunda-Myussera Nature Reserve
 - I10 Pskhu-Gumista Nature Reserve
 - I11 Ritsa Nature Reserve
 - I12 Sataplia Nature Reserve
 - I13 Tusheti Nature Reserve
 - I14 Vashlovani Nature Reserve
- II - National Park**
- II1 Borjom-Kharagauli National Park
 - II2 Kolkheti National Park
 - II3 Mtskheta National Park
 - II4 Tusheti National Park
 - II5 Vashlovani National Park
 - II6 Algeti National park
 - II7 Kazbegi National park
 - II8 Tbilisi National Park
- III - Natural Monument**
- III1 Alazani Floodplain Forests Nature Monument
 - III2 Artsvis Kheoba Nature Monument
 - III3 Takhti-Tepha Nature Monument
 - III4 Imereti Cave Nature Monument
- IV - Managed Nature Reserve**
- IV1 Chachuna Managed Reserve
 - IV2 Gardabani Managed Reserve
 - IV3 Ili Managed Reserve
 - IV4 Iori Managed Reserve
 - IV5 Katsobri Managed Reserve
 - IV6 Kobuleti Managed Reserve
 - IV7 Korughi Managed Reserve
 - IV8 Ktsia-Tabatskuri Managed Reserve
 - IV9 Lagodekhi Managed Reserve
 - IV10 Nedzvi Managed Reserve
 - IV11 Tetrobi Managed Reserve
 - IV12 Ajameti Managed Reserve
- V - Protected Landscape**
- V1 Tusheti Protected Landscape
 - V2 Kintrishi Protected Landscape
- Planned Protected Area**
- P1 Davit Gareji planned protected area
 - P2 Javakheti planned protected area
 - P3 Central Caucasus potential protected area
 - P3A Svanteti planned protected area
 - P3B Racha-Lechkhumi planned protected area



LEGEND

	Settlements		Type of Roads
	TBILISI Capital		
	BATUMI Capitals of Autonomous Republics		
	RUSTAVI Cities		Type of Boundaries
	GORI Centres of Administrative Districts		
	Town		
	Sakrebulo Centres		

